

# “New Life for an Old Coach”

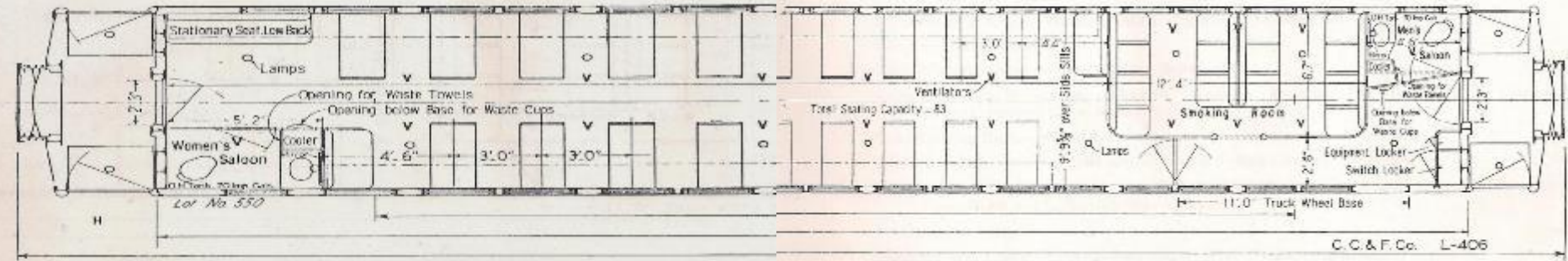
## 2017 Progress Report – Phil Jago



# Outline

## 35 STEEL FIRST CLASS FOR CANADIAN NATIONAL RAILWAYS

to 5054



- Background
- Where we are
- How we got there
- Key Learnings
- On Sheet for 2018
- Q/A
- Built in 1924 for Canadian National by Canadian Car and Foundry Ltd. In Montreal
- One of a series of orders
- Seating (69) plus 14 (Smoking room)
- 82'-4.5" long , weighing 153,000 pounds (empty)
- Inside finish of Mexican Mahogany
- Original Number 5084 (re-numbered in 1969)
- Acquired by BRS in 1989

# Where we are



“B” end Vestibule, LHS



“B” end Vestibule, RHS

# Where we are



Looking towards the "A" end



Looking towards the "B" end

# Where we are



Inside the snack bar / smoker



The "A" end corridor

# Where we are



Tool & fire extinguisher cabinets  
“A” end corridor



Along the “A” end corridor

# Where we are



Snack bar / former Men's Washroom



Ceiling Trim

# How we got there

## “B” end Vestibule



New sheets were riveted into the lower part of the end wall as well as new brackets for the back of the diaphragm



The inside deck plate and top step riser were renewed and work was also done on the draft gear spring

# How we got there “B” end vestibule



The top step riser on the RHS  
has been removed



Using a magnetic drill to create  
holes to hold the top deck

# How we got there

## “B” end vestibule



Bottom tapping the holes in the frame to which the deck screws are attached



The final adjustment on most of the work involves the angle grinder.

# How we got there

## “B” end vestibule



“Bucking” rivets



Cardboard is used to trace a pattern  
for the new door sill and inside floor  
plate

# How we got there

## Walls



A study in contrasts, stained and non-stained wall panels using a special water-based solid mahogany stain



All stained surfaces have received 3-coats of semi-gloss lacquer

# How we got there

## Walls



We apply the first piece of trim to the wall/ceiling intersection



The first window pair is trimmed out

# How we got there

## Walls



Original finish within the former  
Men's washroom



Following stripping the door is returned  
to the equipment locker

# How we got there

## Walls



Preparing the “B” end wall,  
ventilator cabinet and pipe chase



Staining and lacquering involved all  
sorts of bits and pieces.  
Here is one of the ventilator cabinet  
screens

# How we got there

## Walls



# How we got there

## Walls



Detective work to determine the right  
paint colour



Which colour? You be the judge.

# How we got there

## Walls



The rough finish beneath the window blind covers is painted brown to conceal the opening



Applying the first coat of brown paint to the "B" end

# How we got there

## Walls



Cleaning the window sills



A new door takes shape for the emergency tool cabinet

# How we got there

## Ceiling



Lengths of 2"x2" poplar were joined together like a giant puzzle to produce standard 6' ceiling trim lengths



Installing a centre ceiling trim piece

# How we got there

## Ceiling



Masonite edging finishes off the centre ceiling trim



Checking out a piece of curved ceiling trim

# Key Learnings



Hidden places like ceiling cavities provide great learning opportunities



Be careful working with heat!  
Over-zealous use of a paint gun can be dangerous

# Key Learnings



Jigs are your best friend!

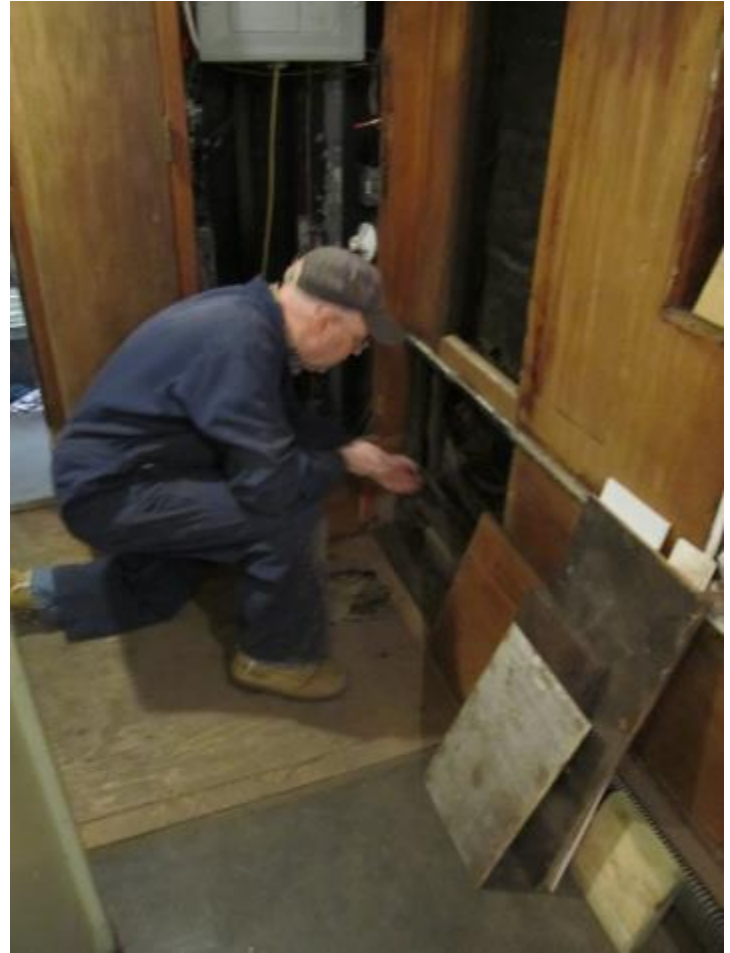


Never be afraid to talk through an issue  
Haste can be waste.

# Key Learnings



Sometimes a job is never done



Patience is a virtue

# Key Learnings



It helps to have access to outside resources.  
Thanks Ross for access to your shop



Some days, the planets completely align

# Key Learnings



Don't throw out anything original until the replacement is installed



No task is simple

# Key Learnings



Watch out for scope creep

# Key Learnings



Watch out for Scope Creep

# Key Learnings



There is more than one way to get the job done



Take the time to learn about how to safely use your tools

# Key Learnings



How can something so big require something so small?



It's okay to have fun

# On Sheet for 2018

- Finish “B” end
  - Latches and catches
  - Hand rails
- Complete interior
  - Replace/paint walls below belt rail
  - Window rails
  - Ceiling (trim/paint)/speakers
  - Electrical cabinet
  - Interior of washroom
  - Snack bar (paint)
  - Coat hooks / luggage racks
  - Flooring
- Paint Exterior (tomato green)
- Brake cylinder/rigging



# Questions and Answers



# Thank you

Copyright © 2018 Phil Jago, Bytown Railway Society